



RELIMINARY PRODUCT ANNOUNCEMENT

Model 7400AD — Real-Time Fiber Monitor

- *Detects presence of potentially hazardous asbestos fibers and other fibers*
- *Laboratory-calibrated for asbestos fibers according to NIOSH method 7400 (phase-contrast microscopy or PCM)*
- *Simultaneously collects sample on standard filter for subsequent microscopic or chemical analysis*
- *Visible and audible alarm when fiber concentration reaches user-defined levels*
- *Field-portable and field-operable with rechargeable battery pack*



DESCRIPTION

The Model 7400AD is a technologically advanced real-time fiber monitor that automatically detects and counts airborne fibers such as asbestos, mineral wool, advanced composites, ceramic and glass. Each 7400AD is factory-calibrated with traceability to NIOSH Method 7400 for asbestos fibers. The 7400AD ignores non-fibrous background particles using the proven principle of electric-field-induced fiber alignment and oscillation.

The 7400AD is the ideal means to check and verify worker safety during asbestos remediation and removal operations. With its fully charged battery pack, the 7400AD will operate unattended for eight hours and record the observed fiber data at regular intervals. If the fiber concentration exceeds a user-defined, pre-set level, an audible alarm sounds.

Positioned ahead of the exhaust of the 7400AD is a filter from which one can obtain samples for later chemical or physical analysis, such as comparison with phase-contrast microscopy.

The on-board, specialized software allows users to set a range of performance features to customize the operation.

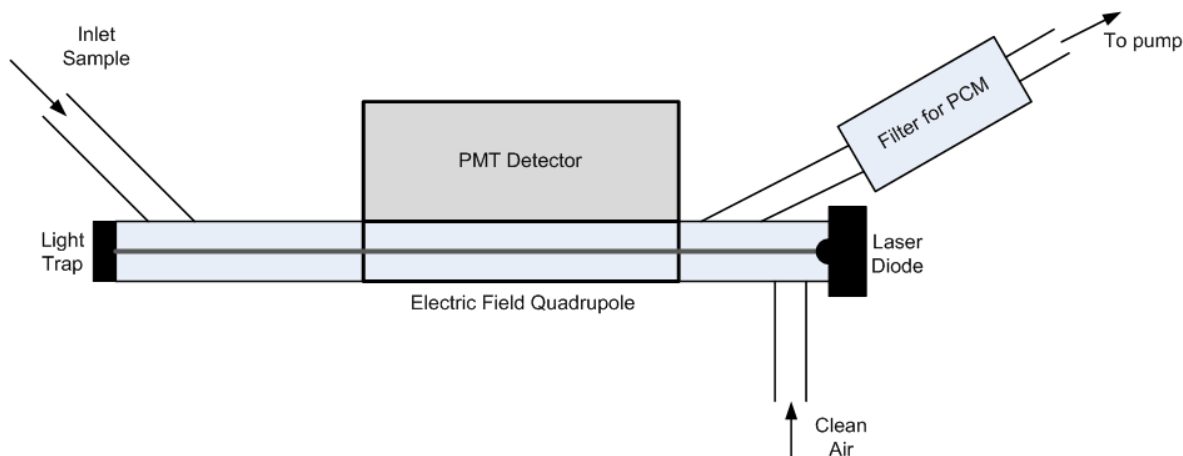
FEATURES

- Measures and reports fiber concentrations in real time.
- Saves measured data over user-selectable sampling interval.
- USB port allows easy upload of data.
- Alarm mode warns when fiber concentrations reach user-selected concentration levels.
- Calculates time-weighted-average exposure limits.
- Back-up filter enables comparison with PCM.
- Color touch-screen LCD provides easy operation and data display.
- Fiber sampling intervals are user adjustable: 1 minute to 24 hours or up to 168 hours of continuous monitoring.
- Easily portable.

APPLICATIONS

- Use before, during and after asbestos abatement to monitor success and ensure safety.
- Measure fiber concentrations in manufacturing operations that use fiber raw materials.
- Monitor airborne fibers that result from uncontrolled releases, such as fires, earthquakes or explosions.

OPTICAL SYSTEM FLOW PATH



SPECIFICATIONS

Subject to change without notice

Detectable Fiber Length	2 to 300 microns
Detectable Fiber Diameter	0.2 to 20 microns
Detectable Fiber Concentration	
Minimum (at 95% confidence and 12.5% precision)	0.10 fibers/liter with 8-hr sampling time 50 fibers/liter with 1-min sampling time
Maximum (10% coincidence error)	5000 fibers/liter
Air Sampling Flow Rate	2 liters/minute
Range of Selectable Fiber Counting Periods	1 minute to 168 hours
Range of Selectable Data-Logging Periods	1 minute to 60 minutes
Weight	7.8 kg (without battery pack) 12.6 kg (with battery pack)
Dimensions	370 mm W x 290 mm H x 295 mm D (without battery pack) 370 mm W x 360 mm H x 295 mm D (with battery pack)
Power	100-240 VAC, 50-60 Hz, 30W
Battery Pack	10A-h, NiMH rechargeable, continuous 8-hour operation

MSP Corporation

5910 Rice Creek Parkway, Suite 300
Shoreview, Minnesota 55126, U. S. A.
Phone: 651.287.8100; Fax: 651.287.8140
sales@mspcorp.com; www.mspcorp.com

Copyright© MSP Corporation (PPA-7400, Rev.B). The MSP logo is a registered trademark of MSP Corporation. All rights reserved.